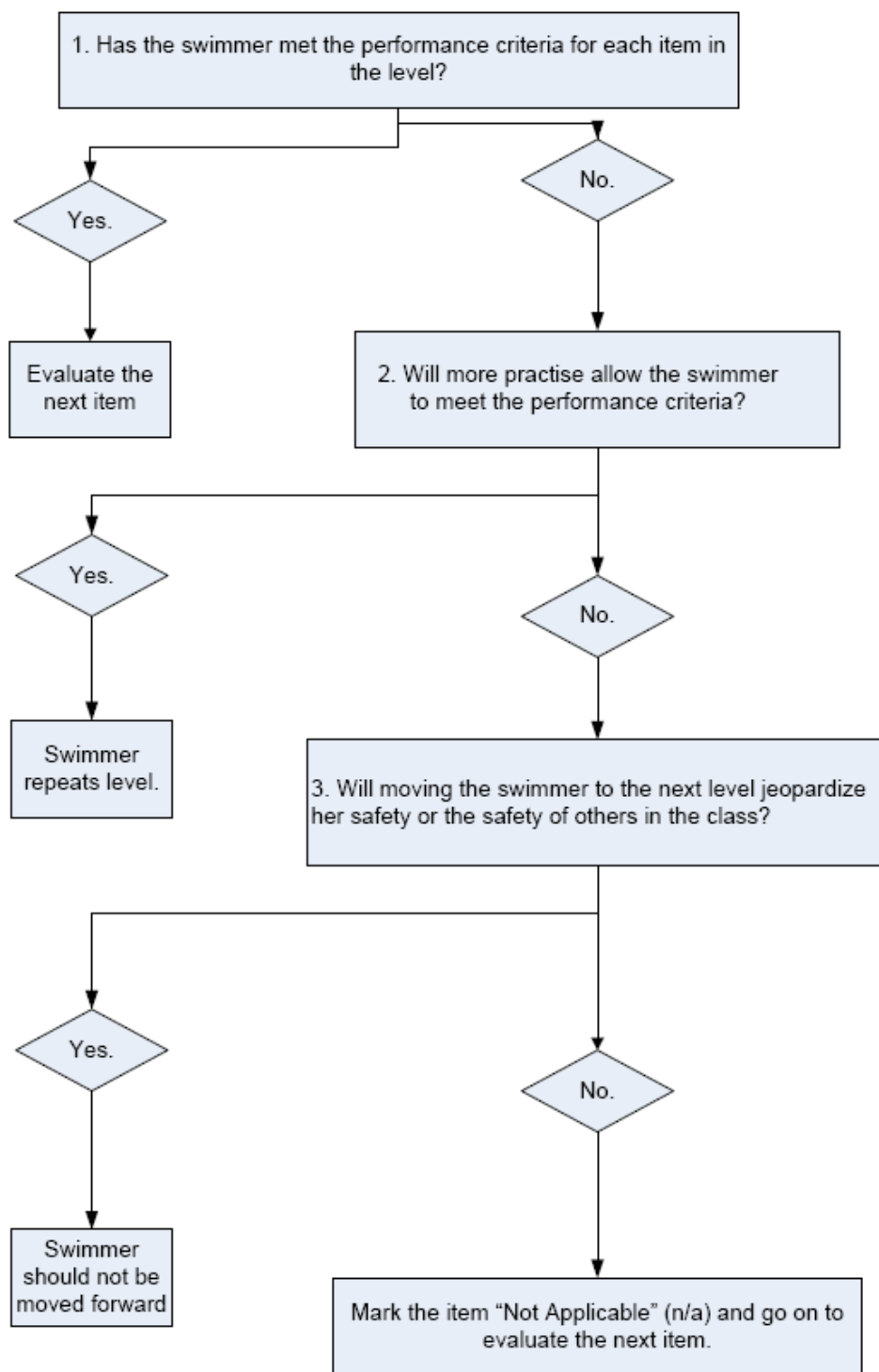


## EVALUATION MADE SIMPLE – DECISION CHART



### ***Keep in mind:***

- If you get to Questions 2 or 3, ask **other instructors & your supervisor for advice** as well as talk with the **swimmer's parents**
- Think **"SAFE and SUCCESSFUL"** instead of Complete or Incomplete
- If you end up with a "Yes" to Question 3, try to think of alternatives (*i.e. private lessons or other programs at your facility/in your community*)